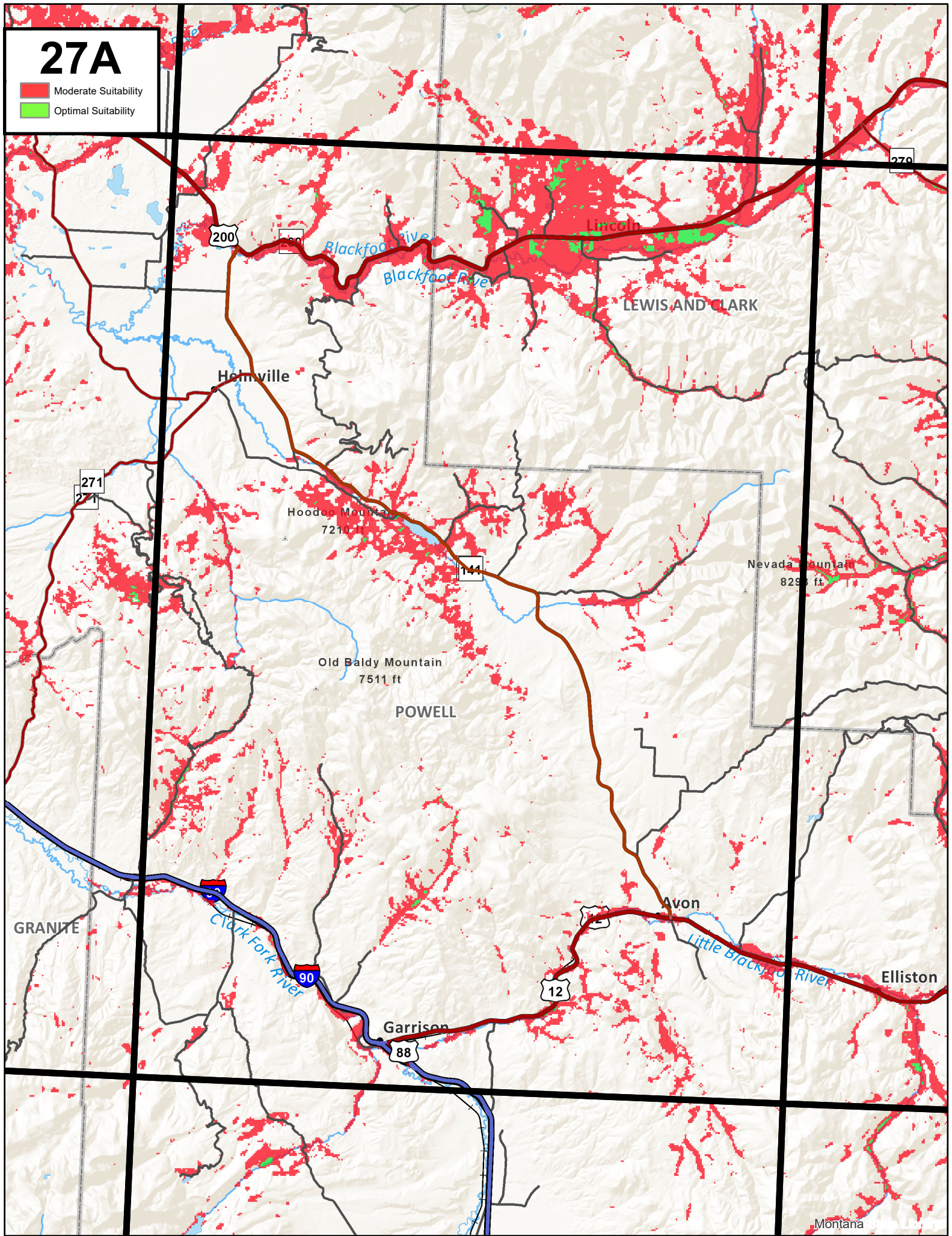


27A

- Moderate Suitability
- Optimal Suitability



GRANITE

200

Blackfoot River

Helmville

Hoodoo Mountain
7210 ft

Old Baldy Mountain
7511 ft

POWELL

LEWIS AND CLARK

Lincoln

Nevada Mountain
8295 ft

Avon

Little Brackley River

Elliston

Garrison

12

88

270

271

Montana